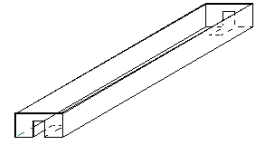


**FEATURES & BENEFITS:**

- Loading trays into the ECP system is ergonomically friendly, safe, easy and quick.
- Feeding products into the host machine's magazine automatically
- Tool-less changeovers can be accomplished in minutes.
- Construction fully supports ANSI/PMMI B155.1-2006 safety and cGMP guidelines.
- The ECP is self-contained, making it easy to field install with any host machine that has a horizontal powered magazine. If your feeder does not have a powered magazine, a kit can be supplied.
- Tray input capacity changed easily by increasing conveyor length.



Tray Guidelines

PRODUCTS TYPICALLY HANDLED (In Trays):

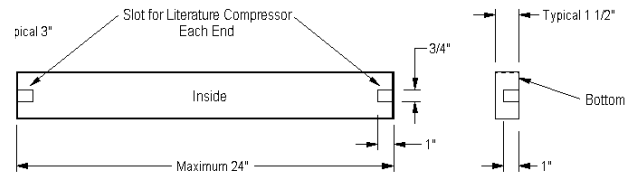
- Outserts
- Inserts
- Blisters

PRODUCT SIZE RANGE:

- Min: 1.00" x 1.00" 25 mm x 25 mm
- Max: 4.00" x 4.00" 100 mm x 100 mm

TRAY SIZE RANGE:

Max: 4.00" x 4.00" x 24.00" 100 mm x 100 mm x 600 mm



MAXIMUM SPEEDS:

- Automatic loading of up to 25 trays per minute

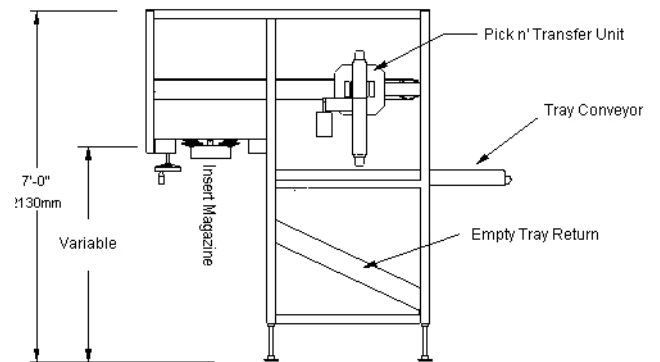
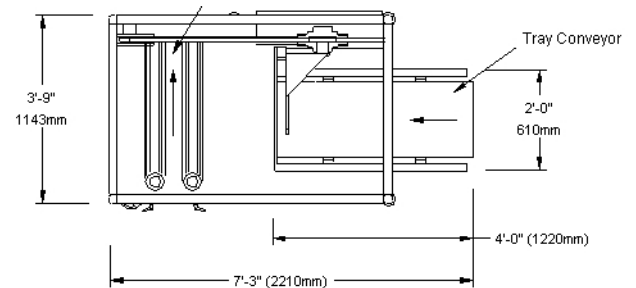
STANDARD MACHINE FEATURES:

- Four-Foot Long Flat Belt Tray Infeed
- Quick Change Gripper Head
- Empty Tray Return Chute
- Feeder Magazine Interface Kit
- Allen-Bradley Micrologix 1500 PLC
- Push-Button HMI Control Station with Two-Line Message Display
- Three-Element Stack Light
- Tool-Less Changeover
- Stainless Steel Guarding with Clear Polycarbonate Doors
- Tubular Welded Frame
- Steel-It Paint

OPTIONS AVAILABLE:

- Extended Tray Infeed Conveyors
- Powered Empty Tray Return Conveyor
- Allen-Bradley PanelView Touch Screen HMI
- Wide model for up to 39" (1000 mm) long tray

Floor Plan View



Elevation View

TYPICAL UTILITY REQUIREMENTS:

ELECTRICAL: 230 VAC 3 Ph 50/60 Hz
 AIR: 80 PSI Filter and Regulator Provided