



**DEPENDABLE
AND
CONSISTENT
PERFORMANCE
FOR
GREATER
PRODUCTIVITY**



Impulse™ Friction Feeder
shown with optional floor stand
and stack light

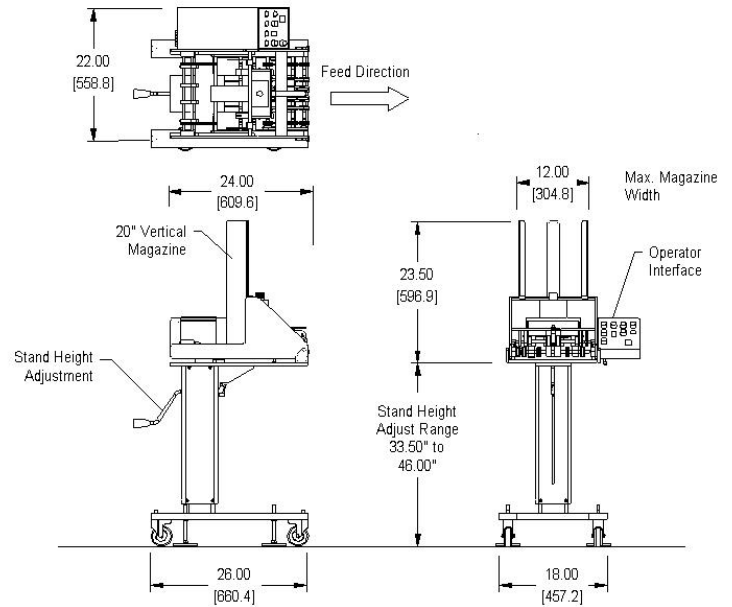
MODELS:
12" Wide

**MATERIALS
TYPICALLY
HANDLED:**

- Sheets
- Plastic Cards
- Forms
- Folded Documents
- Envelopes
- Magazines
- Brochures
- Greeting/Novelty Cards

FEATURES & BENEFITS:

- The robust design provides **years of service**.
- Machine maintenance can be done quickly and easily, **maximizing uptime and productivity**.
- Built-in versatility provides the **flexibility to process the widest variety of material types, sizes and thicknesses**.
- Simple, easy-to-use controls and minimal tool-free setup adjustments allow for **greater uptime and increased productivity**.
- Base machine includes many standard features translating to an **excellent value**.

**TYPICAL UTILITY REQUIREMENTS:**

ELECTRICAL: 115 VAC, 6 Amps, 60Hz

MAXIMUM SPEEDS:

- 400 parts per minute (or higher based on the application)

CONTROLS:

- Simple Push-Button Operation
- Automatic Rotating Separator
- Trigger Delay
- End-of-Batch Speed Change
- Illuminated Status Indicator
- Host System Interface (Optically Isolated Solid State Relays)
- Continuous Dispense

OPTIONS AVAILABLE:

- Automatic Product Handling/Collating
- Vision Verification
- Insert Feeding
- Open Flap Detection
- Coding/Printing
- PC-Based HMI Touch Screen
- Bar Code Verification
- Stainless Steel Enclosure

PRODUCT SIZE RANGE:

- Minimum: 2.00" W x 3.00" L
- Maximum: 12.00" W x 12.00" L
- Material Thickness can range from .002" up to .750"