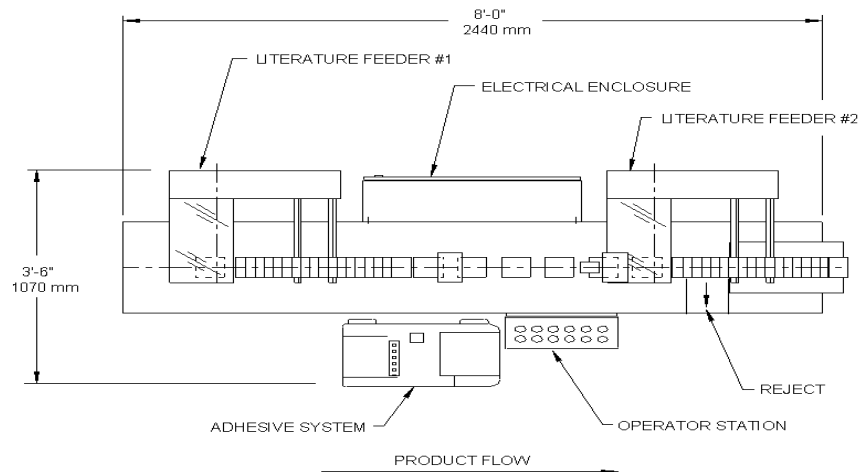




FEATURES & BENEFITS:

- Operating speeds up to 220 TwinSerts per minute.
- Typically done off-line, this **stand-alone, self contained system** benefits both the packager & manufacturer.
- Assembled package **responds to strict FDA guidelines** for labels & inserts.
- Eliminates the need for multiple feed stations, **resulting in packaging process cost savings.**
- Product magazines can be continuously loaded while machine is operating.
- **Patented rotary motion** is a proven design with years of field tested experience.
- No Product-No Placement feature **reduces production waste.**
- **Easy-to-operate control panel** with illuminated display for missed detection fault.
- **Tool-less changeovers** can be accomplished in minutes.
- Construction fully supports ANSI/PMMA B155.1-2006 safety and cGMP guidelines.

**STANDARD MACHINE FEATURES:**

- Eight-Foot Long Lugged Chain with Disappearing Flights
- Two Rotary Feed Stations with 30" (762 mm) Inclined Magazines
- Nordson Pro Blue with Two Hoses and Heads
- Variable speed Main Drive Motor
- Quick Removable "Forming Chamber" for maintenance and changeover
- Non-Powered Compression Section
- No-Tool Adjustable Sideguides
- Vacuum Pump
- Message Display

TYPICAL UTILITY REQUIREMENTS:

ELECTRICAL: 230 VAC, 3 Ph, 50/60 Hz

AIR: 90 PSI Minimum

(Filter and Regulator Provided)

VACUUM: Up To 10 SCFM At 20" (508 mm) HG
(if optional pump is not purchased)

PRODUCT SIZE RANGE:

Inserts, Outserts or Labels on Backing:

- Min: 1(25.4 mm) -1/2"(12.7 mm) x 1"(25.4 mm) x .03"(.76 mm)
- Max: 4" (102 mm) x 3"(76 mm) x .38"(10 mm)

OPTIONS AVAILABLE:

- Machine Orientation
- Four-Foot Powered Magazine
- Bar Code Scanner
- Low-Level Magazine Sensors
- Product Reject Station with Reject Verification
- Venturi Vacuum System
- Three-Element Stack Light
- Lot and Batch Counters
- Casters
- Commissioning Documentation Package
- Discharge Options Include:
 - Catch bin
 - Shingling Conveyor
 - Finished Product Upender/Grouper
 - Automatic Tray Loader

MAXIMUM SPEEDS:

Up to 220 TwinSerts per minute