



# VBF-M

## Vibratory Bowl Feeder

**CLOCKWISE  
or  
COUNTER-CLOCKWISE  
ROTATION**

**MODELS:**

VBF-15  
VBF-18  
VBF-21  
VBF-24



Clockwise  
Model 15" ID

**SPECIFICATIONS**

### FEATURES & BENEFITS:

- Simple design translates to an **easy installation**.
- 11 gauge stainless steel construction provides a **rugged and durable machine**.
- Custom tooling for your specific part yields a **reliable and efficient operation**.
- Simple controller makes the machine **easy to operate**.
- Heavy-duty base drive offers a **virtually maintenance free operation**.
- Quick and easy product changeover means **less downtime and greater machine efficiency**.
- Many options available, **allowing the end user to customize the feeder to their specific needs**.

# SPECIFICATIONS

## VBF-M Vibratory Bowl Feeder

### TYPICAL POWER REQUIREMENTS:

ELECTRICAL: 110 VAC 15 Amps Max  
AIR: 80 PSI (when required)

### SPEED RANGE:

• 30 to 300 Parts Per Minute  
(depending upon the application)

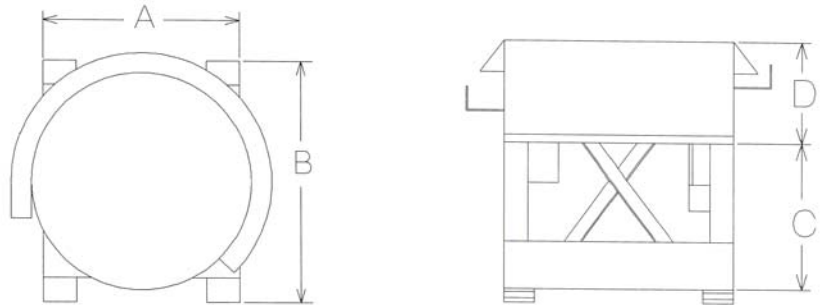
### BOWL DIMENSIONS

MODEL	A	B	C	D*
15 in ID	15 in	17.50 in	10.125 in	5 in
18 in ID	18 in	20.50 in	11.250 in	5 in
21 in ID	21 in	23.50 in	11.375 in	6 in
24 in ID	24 in	26.50 in	11.375 in	6 in

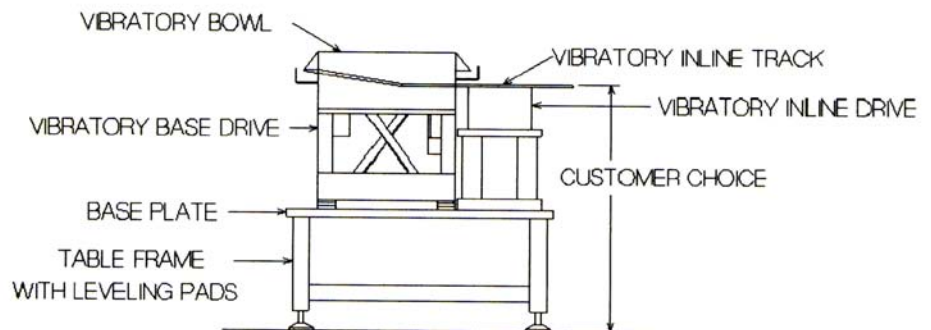
\*Actual Bowl Height Depends on Part Size

### OPTIONS AVAILABLE:

- Clockwise or Counterclockwise Rotation
- Multiple Discharge Lanes
- Multiple Part Tooling
- Quick Dump Windows
- Vibratory Inline Tracks
- Gravity Tracks
- Conveyors
- Base Plates
- Table Frames
- Vibratory Storage Hoppers
- Elevating Storage Hoppers
- Bowl Coatings
- High Level Shutoff
- Sound Enclosures
- FDA Pharmaceutical Construction
- Tab Mounts
- Escapements, Shuttles, Pick and Place



Typical Feed System



Putting Our Best on the Line

763.425.8808

[www.mgsmachine.com](http://www.mgsmachine.com)

1/2009