



VBF-S

Vibratory Bowl Feeder

**CLOCKWISE
or
COUNTER-CLOCKWISE
ROTATION**

MODELS:

VBF-6

VBF-8

VBF-10

VBF-12



Clockwise
Model 6" ID

SPECIFICATIONS

FEATURES & BENEFITS:

- Simple design translates to an **easy installation**.
- 11-gauge stainless steel construction provides a **rugged and durable machine**.
- Custom tooling for your specific part yields a **reliable and efficient operation**.
- Simple controller makes the machine **easy to operate**.
- Heavy-duty base drive offers a **virtually maintenance free operation**.
- Quick and easy product changeover means **less downtime and greater machine efficiency**.
- Many options available, **allowing the end user to customize the feeder to their specific needs**.

SPECIFICATIONS

VBF-S Vibratory Bowl Feeder

TYPICAL POWER REQUIREMENTS:

ELECTRICAL: 110 VAC 15 Amps Max

AIR: 80 PSI (when required)

BOWL DIMENSIONS:

MODEL	A	B	C	D*
6 in ID	6 in	8.25 in	5.375 in	3 in
8 in ID	8 in	10.25 in	7.375 in	3 in
10 in ID	10 in	12.25 in	7.375 in	4 in
12 in ID	12 in	14.50 in	8.875 in	4 in

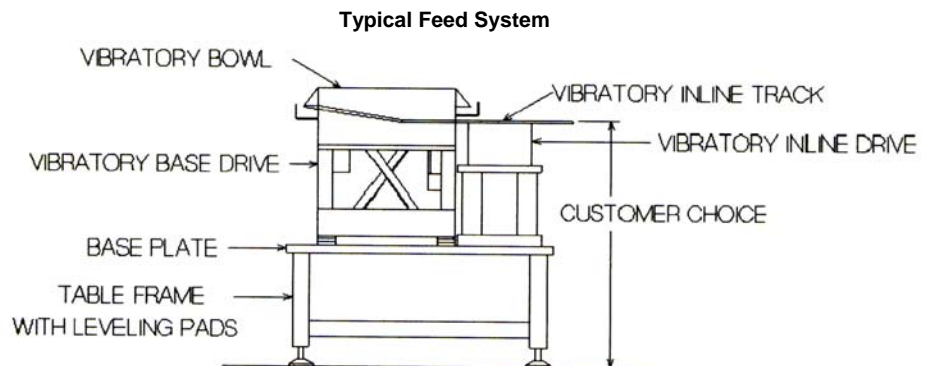
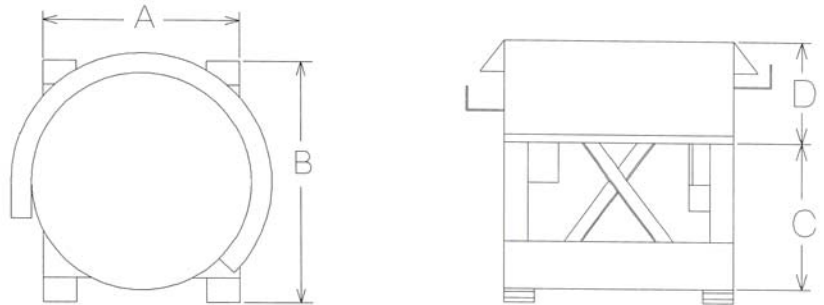
*Actual Bowl Height Depends on Part Size

SPEED RANGE:

- 5 to 100 Parts Per Minute
(depending upon the application)

OPTIONS AVAILABLE:

- Clockwise or Counterclockwise Rotation
- Multiple Discharge Lanes
- Multiple Part Tooling
- Quick Dump Windows
- Vibratory Inline Tracks
- Gravity Tracks
- Conveyors
- Base Plates
- Table Frames
- Vibratory Storage Hoppers
- Elevating Storage Hoppers
- Bowl Coatings
- High Level Shutoff
- Sound Enclosures
- FDA Pharmaceutical Construction
- Tab Mounts
- Escapements, Shuttles, Pick and Place



Putting Our Best on the Line

763.425.8808

www.mgsmachine.com

1/2009