



Matrix TL™

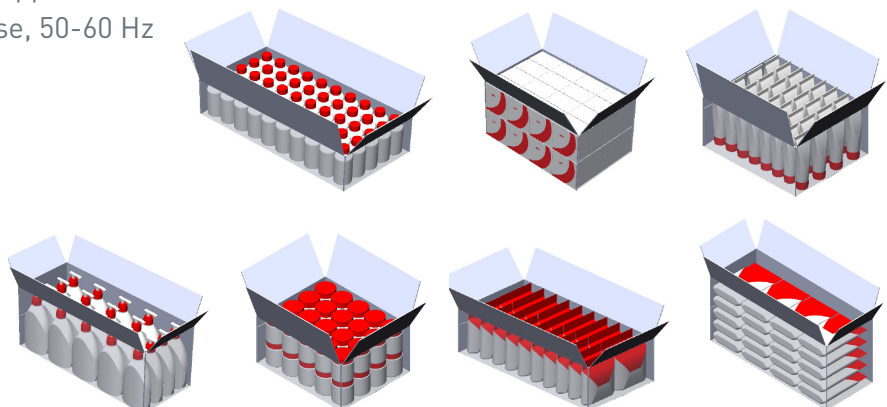
Top Load Case Packer

Features and benefits

- Small footprint: collating and case packing base machine is just over 4 meters long
- Positive vacuum case opener virtually eliminates case set-up failures
- Packages up to 20 cases per minute
- Easy-to-load powered case magazine with ergonomic design prevents operator injury and strain
- Servo-driven robotic gantry loads a wide array of products
- Powered case magazine with ergonomic design is easy to load, preventing operator injury and strain
- Servo-driven case transport and closure system capable of both tape and hot glue closing within frame
- Innovative balcony design eases cleaning and lot batch changeover, saving time and improving OEE
- Full height guarding doors provide complete, open access to machine for ease of maintenance, inspection, and cleaning
- Easy changeovers with drop in case tooling, plows, quick release handles, digital indicators, and mounted scales
- A servo-driven, simple and robust design increases component life, reducing maintenance and operating cost even with 24/7 operation
- Construction adhering to cGMP. Built in full compliance with ANSI/PMMA B155.1-2023 standard
- Serialization and inspection capable with integral infeed collator design
- Frame-welded and ground, painted tubular frame
- Allen-Bradley CompactLogix motion control system and HMI touchscreen Operator Interface
- Efficient air use scaled to the application
- Power: 230 or 460 VAC, 3 Phase, 50-60 Hz
- Payload up to 40 lbs. / 18.1k

Case styles

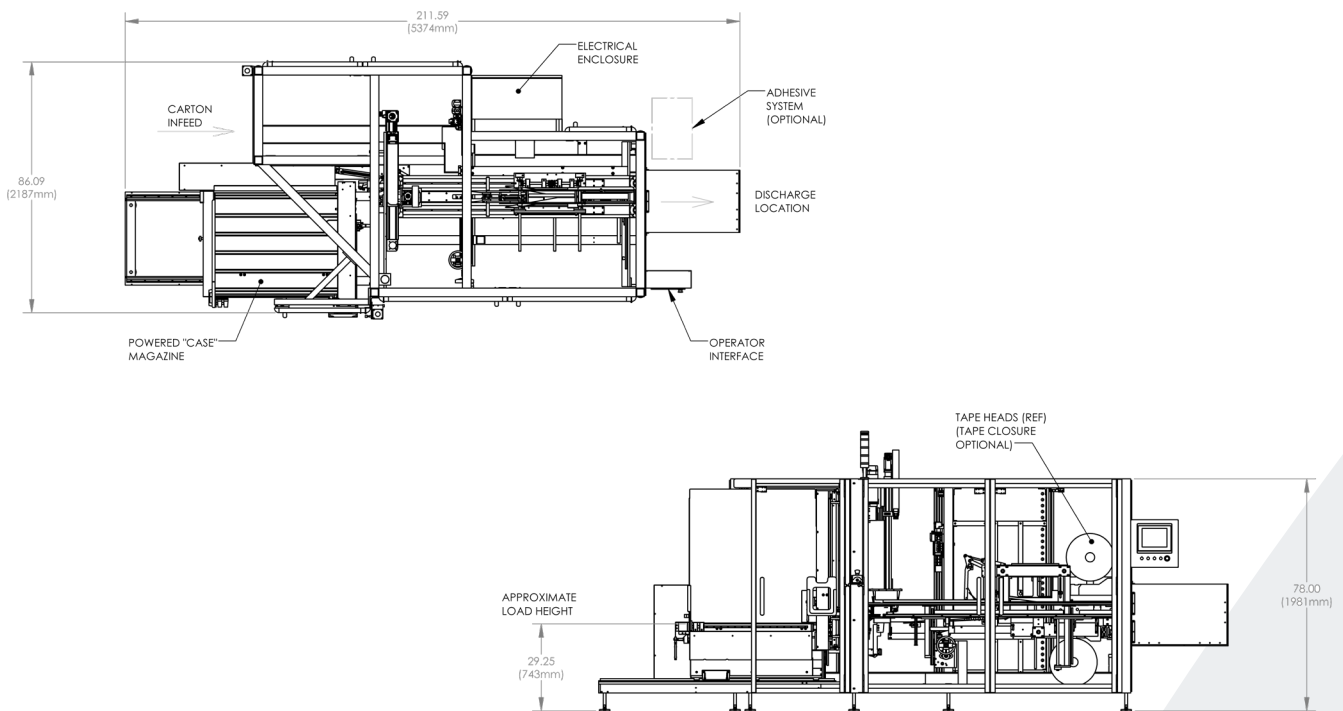
- Regular slotted case (RSC)
 - Tape or glue closure



MatriX TL™ - Top Load Case Packer

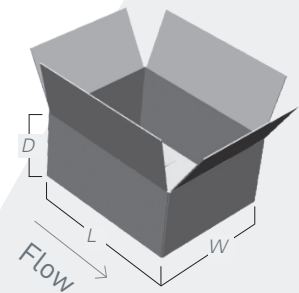
Options

- Automatic product handling/collating
- Vision verification
- Insert feeding
- Open flap detection
- Coding, printing and labeling modules
- Barcode verification
- Remote diagnostics
- Illumaguard®
- Pharmaceutical validation assistance documents
- Batch record data collection
- Performate (Coesia IoT platform) ready



Standard case size range

	Length (L)	Width (W)	Depth (D)	Max speed
Minimum	6 in (152 mm)	4 in (102 mm)	5 in (127 mm)	-
Maximum	20 in (508 mm)	16 in (406 mm)	16 in (406 mm)	20 CPM



MGS
 9900 85th Ave North, Maple Grove, MN 55369 USA
 T + 1 (800) 790-0627
www.mgsmachine.com / info@mgsmachine.com

