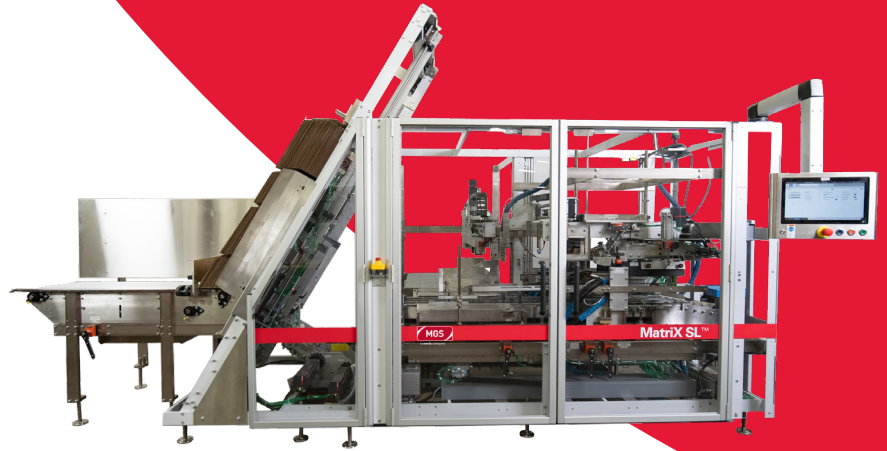




MatriX SL™

Side Load Case Packer

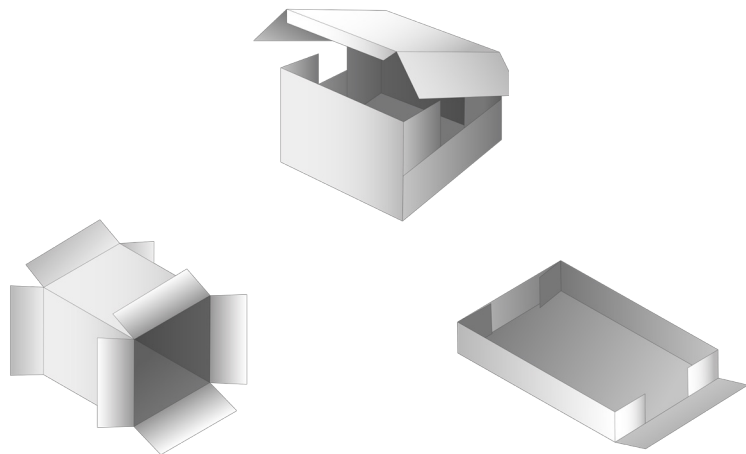


Features and benefits

- 3-in-1 capabilities: Handles Regular Slotted Containers, Wrap Around, and Tray case styles, all within a single platform
- Engineered with maximum flexibility for seamless adaptation to market demands
- Packages up to 30 cases per minute
- Mid-size Footprint: Measuring just under 5 meters in length
- Quick, simple, no-tool changeovers in under 10 minutes
- Seamlessly integrates with upstream equipment
- Flexibility in product type, including cartons, bottles, stand-up pouches, cups, flow-wraps, bags, rigid containers and much more
- Advanced linear transport system and robotic case setup easily accommodate variations in case size, weight, and speed through an enhanced automation platform
- Reduction in material consumption with wrap around and tray case style
- HMI: Touchscreen with smart and intuitive OptiMate operator interface
- PLC and Motion Controls from Beckhoff
- Power: 480 VAC, 3 Phase, 50-60 Hz, 46 Amps
- Air: Efficient air use scaled to the application
- Payload of up to 40 lbs / 18.1k

Case styles

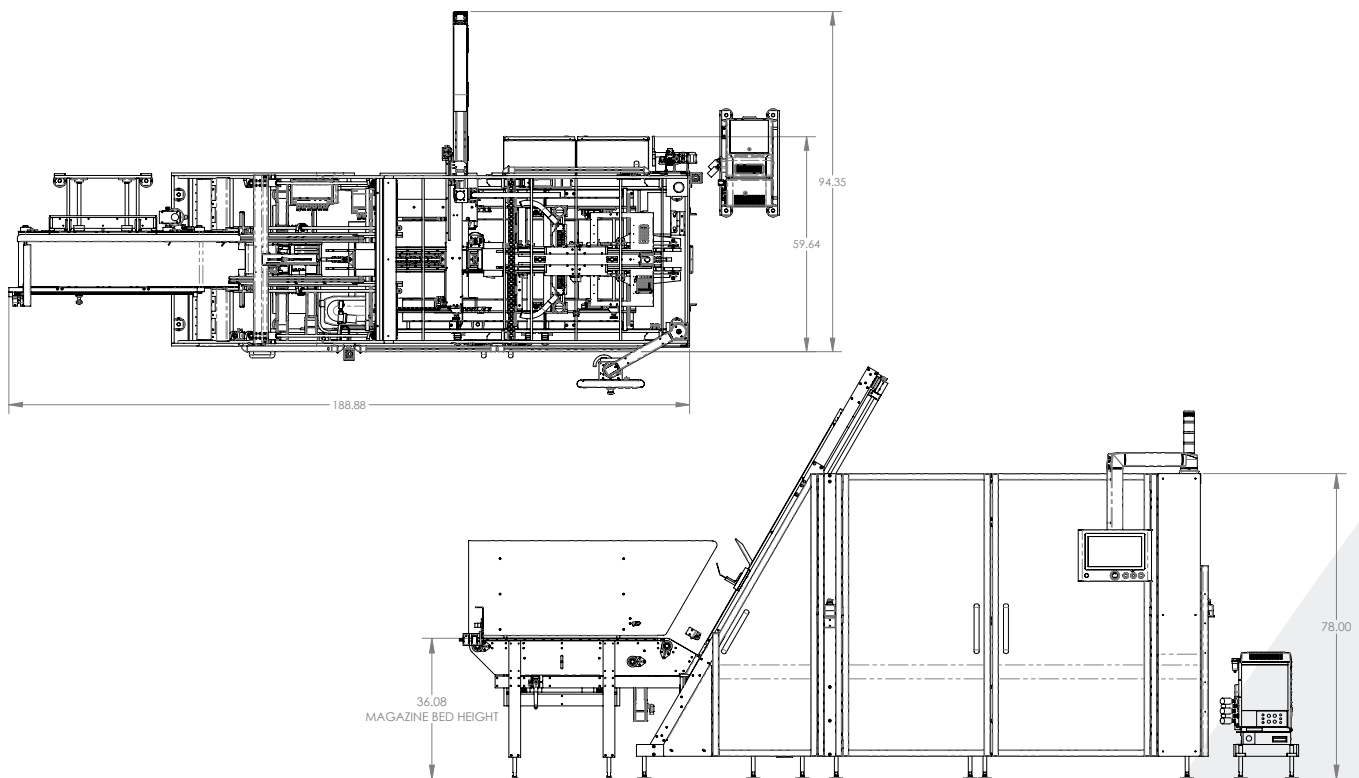
- Regular slotted containers (RSC)
- Wrap arounds (WA)
- Trays
 - Glue closure



MatriX SL™ - Side Load Case Packer

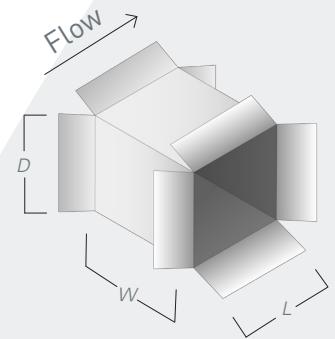
Options

- Automatic product handling/collating
- Vision verification
- Open flap detection
- Coding, printing and labeling modules
- Barcode verification
- Remote diagnostics
- Illumaguard®
- Pharmaceutical validation assistance documents
- Batch record data collection
- Control System: Allen Bradley
- PerformMate (Coesia IoT platform) ready



Standard case size range

	Length (L)	Width (W)	Depth (D)	Max speed
Minimum	6" (152mm)	6" (152mm)	4" (RSC) / 4.5" (WA, tray) (102mm / 114mm)	Up to 20 CPM
Maximum	20" (508mm)	16" (406mm)	16" (RSC, WA) / 8" (tray) (406mm / 203mm)	Up to 30 CPM



MGS
9900 85th Ave North, Maple Grove, MN 55369 USA
T + 1 (800) 790-0627
www.mgsmachine.com / info@mgsmachine.com

